

TECHMASTER with IP Option

LOCK



Time Lock secure access during previously specified time frames



Audit Capability
900 actions recorded



Penalty will cause a four minute delay after four consecutive invalid codes are entered



Time Delay can be programmed on each lock. Five time delays can run at once.



Override Reopening makes it possible to reopen the lock and override the Time Delay



Silent Alarm Signal available on each lock



Remote disable prevents physical access by specific users



Benefits Key



Management



Armed Robbery



Burglary



Users - Program up to 90 users.

IP Software Benefits



Remote Disable

With the Remote Disable function you will be able to remotely prevent access by specified users using your IP interface

Auditing

Each lock will record the last 900 operations with time & date, user, and function.

Time Lock

Time Lock is programmed around your hours of operation. This ensures that a closed store means a locked safe. The safe cannot be accessed outside of business hours.

Remote Access

The ability to manage your safe remotely from any location through internet access (IP Connectivity).

Users

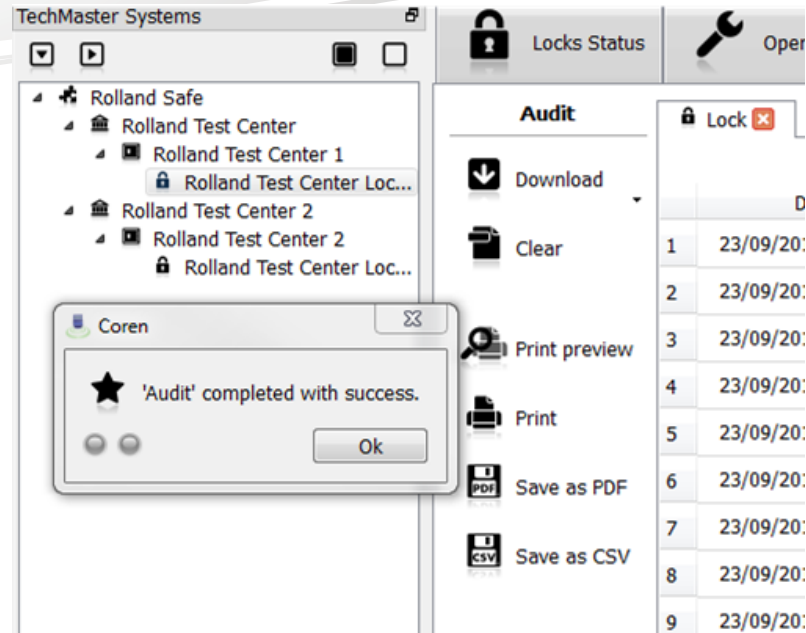
The programmable time-delay system allows electronically controlled access for 2 masters, 1 manager, 1 override manager and up to 90 users.



TechMaster Lock



IP Module



Remote access using IP software

Additional Benefits

Penalty

Four consecutive invalid codes initiates four minutes delay period. During this period LCD will display the message "Penalty" when any operation will be performed.

Multiple Locks

TechMaster can manage up to five locks.

Time Delay

Time delay can be set on each lock with up to five delays all running at once. Delay period can be between 0-99 minutes. Open period can range between 1-19 minutes.

Low Battery Warning

Repeated audio and visual signals during opening indicate low battery.

Emergency Battery

If your TechMaster is powered by the mains or an internal battery box it is possible to connect an emergency battery to the keypad in case of sudden blackout: connect a new 9V ALKALINE battery to the battery connector located at the bottom of the keypad.

Dallas

3140 Towerwood Drive
Dallas, Texas 75234
Tel. 972.243.3711
Toll. 800.225.2984

www.rslc.net

New Orleans

1926 Airline Drive
Metairie, LA 70001
Tel. 504.835.7233
Toll. 800.873.8898

www.rollandnola.net