

SPEEDFACE+

Body Temperature & Mask Detection +
Face & Palm Access Control Readers

SF1008+



SpeedFace + is a series of high performance face, palm, and fingerprint recognition readers that additionally detect if a person has acceptable body temperature and is wearing a protective mask.

The SpeedFace + embedded face & palm recognition sensor provides 100% touchless user authentication for various applications including Access Control, Time & Attendance, Visitor Management, Event Management, and more.

Model SF1008+ can store and match up to 50,000 faces in less than 0.3 seconds while operating in both total darkness and bright sunlight (up to 50,000 Lux).

Body Temperature & Mask Detection

In addition to providing face, palm, and fingerprint user authentication, SpeedFace+ protective mask is being worn. Users can be denied door access if an unacceptable body temperature or if no mask is detected.

The ability to quickly & accurately identify people having unacceptable body-temperature or not wearing a masks is becoming increasingly important for airports, schools, commercial office buildings, and other public meeting areas.

People having unacceptable body-temperature and their supervisors can then take appropriate action. SpeedFace+ combines a powerful embedded thermal camera and ZKTeco's latest face, palm, and fingerprint recognition algorithms that are supported by an optimized dual-core processor. SpeedFace+ is unmatched in accuracy, matching-speed, and versatility. It provides advanced security and convenience, all on a single affordable device.

FEATURES:

- User authentication read range up to 8 feet
- Stores & matches up to 50,000 face templates
- Face verification possible while wearing protective mask (palm recognition advised)
- Can store & match up to 5,000 palm templates
- Has an 8" programmable touchscreen display
- Intelligent energy-saving design
- Dual-lens IR & VL camera recognizes faces in both total darkness and bright sunlight (<50,000 Lux)
- Body-temperature detection accurate up to 0.6 F from up to 18" away

SPECIFICATIONS:

Capacity (model SF1008+)

Faces: 50,000 | Palms: 5,000

Compatibility

Wiegand Input Panels Wiegand Output readers ZKBioSecurity Software
ZKTeco Security Relay Box (SRB)

Hardware

900 MHz Dual Core CPU
512MB RAM/ 8G Flash
8" Touch Screen Display 2MP
WDR Camera
Distance Detection Sensor
Reset Button & Tamper Switch

Access Control Interface

Lock Relay Output
Alarm Output /Auxiliary Input
Exit Button / Door Sensor

Special Functions

0.3s Face Recognition Speed
Liveness Detection
Event Snapshot

Standard Functions

Access Levels, Groups, Holidays
DST, Duress Mode (password)
Anti-Passback, Record Query
Tamper Switch Alarm

Temperature Detection

Temperature Accuracy: +/- 0.6°F
Temperature Distance: 18 inches
Protective Mask Detection

Communication

TCP / IP
RS485
Wiegand Input / Output
Optional Wi-Fi

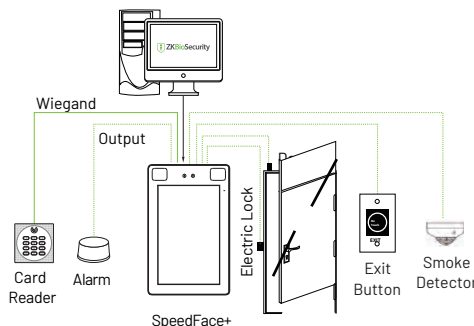
Additional Info

Face Algorithm: ZKLiveFace 5.8
Working Temp: -22°F to 140°F
Easily change display from °F to °C
Working Humidity: ≤ 93%
Storage Temp: - 40°F to 169°F
Storage Humidity: ≤ 93%
Net Weight: 1.5 lbs
Size (HxLxD): 8.9 x 5.6 x 1 inch

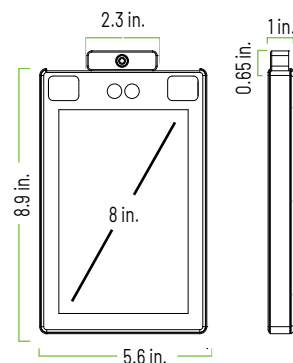
Power Operating Voltage: 12V DC
Current Draw: < 2,000mA



CONFIGURATION:



DIMENSIONS:



Model SF1008+

www.RollandSolutions.com/tempreader

© Copyright 2020. Rolland Solutions.

All other product and company names mentioned are used for identification purposes only and maybe trademarks of their respective owners.

All specifications are subject to change without notice. All rights reserved.

ProSFPF-04132020